



Sub Area Spatial Options

Testing Additional Growth

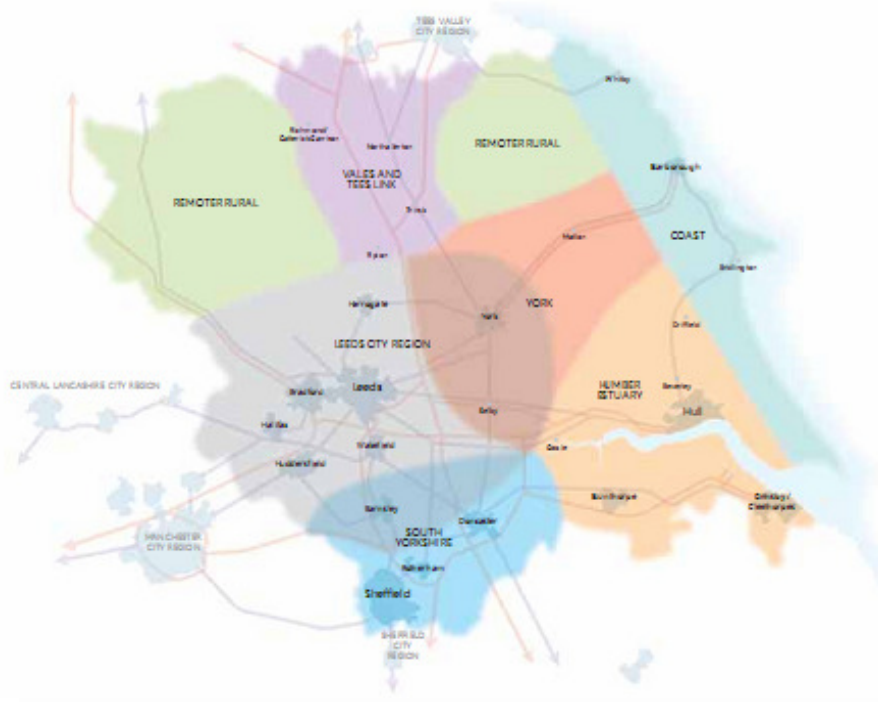


Levels of Growth

Distribution

Sub-Area Spatial Options

Sub-Areas



- Leeds City Region
- South Yorkshire
- Humber Estuary
- York
- Vales and Tees Links
- Coast
- Remoter Rural

Spatial Options



- How long can the current approach last?
- How can the approach be evolved?
- Where might more housing be located?
- How soon will locations need to be brought forward?

Strategic Approaches



The Housing Challenge

The Yorkshire and Humber Plan - 2009 Update

Call for Evidence



Source: Navigator PR and Marketing Communications

Approach 1: Maintaining the Current Strategy

The strategy set out in the existing Plan is to achieve a more concentrated pattern of development in the Region than in the past - focussed on a network of settlements across the Region - identified in The Plan as Regional Cities, Sub-Regional Cities and Towns and Principal Towns (see map opposite). This general approach minimises the use of land and seeks to better relate jobs and homes.

A key emphasis is placed on the continuing transformation of existing towns and cities. Making the best use of brownfield sites (previously developed land) and opportunities is the first priority, followed by other opportunities within the relevant towns and cities, and to only then consider extensions to them. A transport-orientated approach is central - focusing development where best use can be made of existing infrastructure and there is less need to deliver new infrastructure.

This approach seeks to make the existing settlement pattern in the Region work better.



© Crown Copyright. All rights reserved. Yorkshire and Humber Assembly License no 10079619, 2004

There is a strong degree of 'urban focus' - with most development taking place in the 'Regional' and 'Sub-Regional' Cities and Towns but coupled with a development focus on Principal Towns in rural and coastal areas (to enhance their service centre roles).

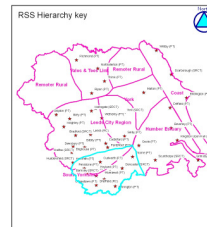
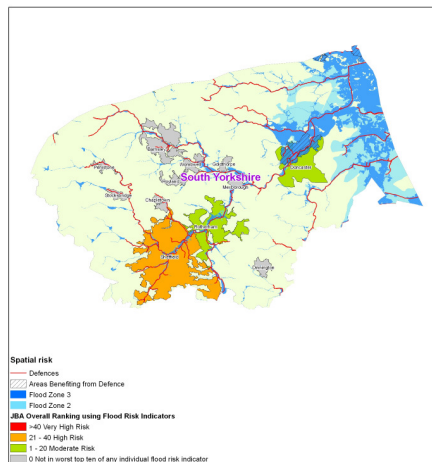
Continuing economic change is likely to contribute more re-development opportunities across the Region. The re-structuring or re-engineering of our existing towns and cities, along with extensions to them, could continue to offer significant potential to accommodate most of this future growth. Our current strategy has received wide support across the Region and in other regional strategies. It may be appropriate to keep it. However we do need to test how long we can continue to guide development within and around the settlements identified in The Plan or whether over the long term a different approach will be needed.

Approach 2: Major Urban Expansions

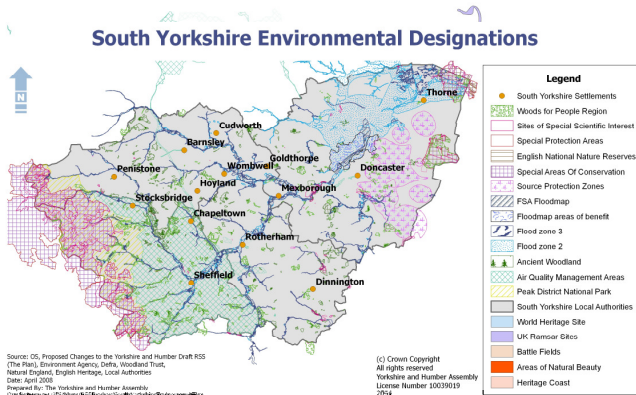
This approach involves significantly growing some existing settlements - well beyond their current boundaries - in a very concentrated way. This would result in a 'sharper urban

- Call for Evidence
- Strategic Approaches
 - Maintain the current strategy
 - Major urban expansions
 - New Settlements
 - Growth Points & Growth Areas
 - Adding to the settlement network

Strategic Opportunity Areas?



This map is reproduced from Ordnance Survey material with the permission of Ordnance Survey on behalf of the Controller of Her Majesty's Stationery Office. Crown copyright and may be subject to intellectual property rights. Yorkshire and Humber Regional Assembly.



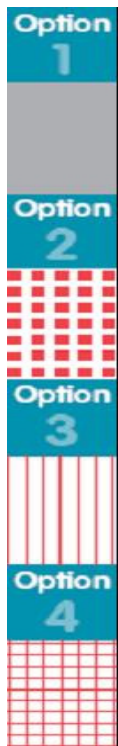
- Identifying strategic opportunity areas based on evidence work including:
 - Key transport corridors
 - Environmental constraints
 - Regional Flood Risk Assessment

Bringing it together



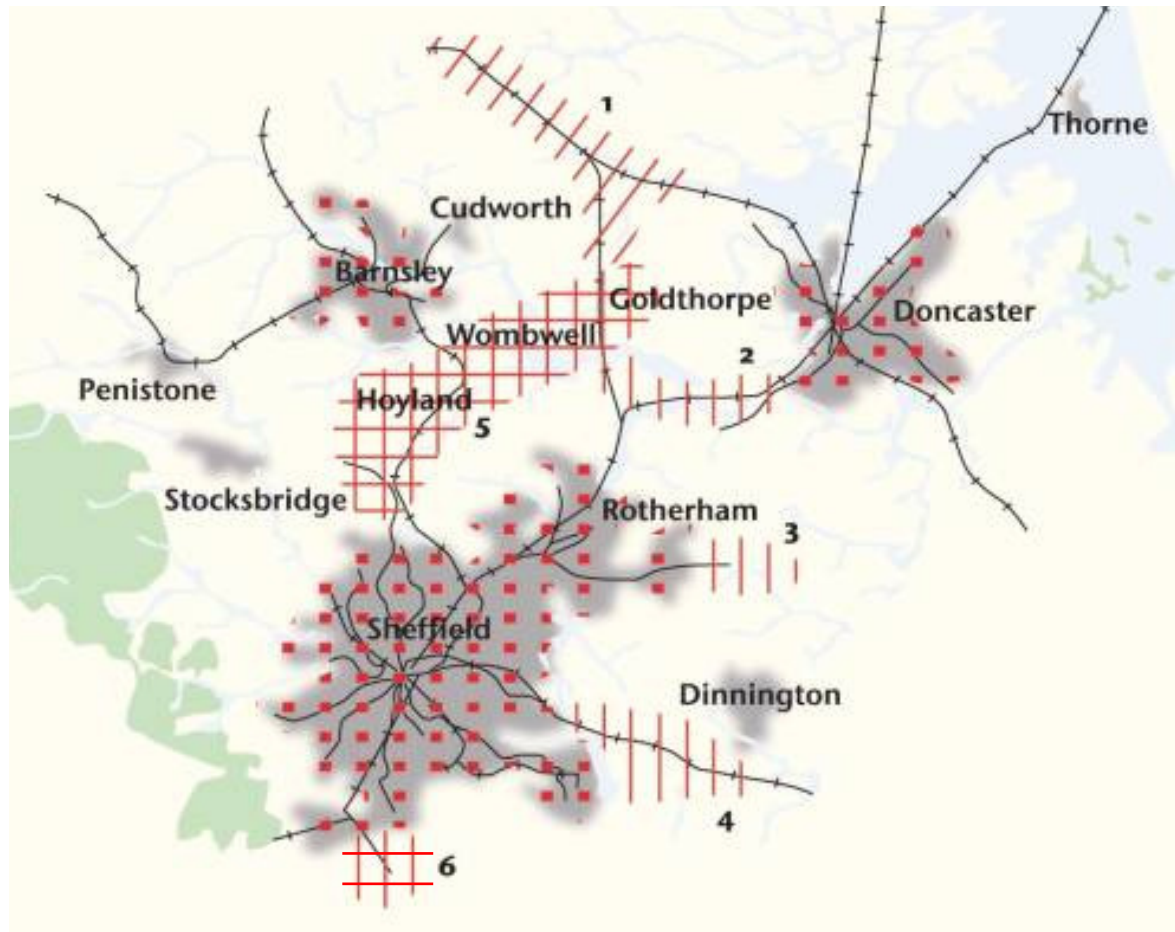
Strategic Opportunities	Strategic Approaches
Sub-Area Spatial Options	

Strategic Approaches



- Maintain the current approach
- Stronger focus on cities and larger towns
- Key settlements in public transport corridors
- Areas where groups of towns can develop

South Yorkshire



Conclusions



- Is the Spatial Options document focussed on the right issues?
- Does it ask the right questions to assist us in clarifying the approach to the location of development?
- Is the format helpful?